



edilportale®
smart
village
in tour MADE_{expo}
in collaborazione con

segui su   

RIMINI, 8 maggio 2013

MED in Italy, la casa ad energia positiva per il clima mediterraneo

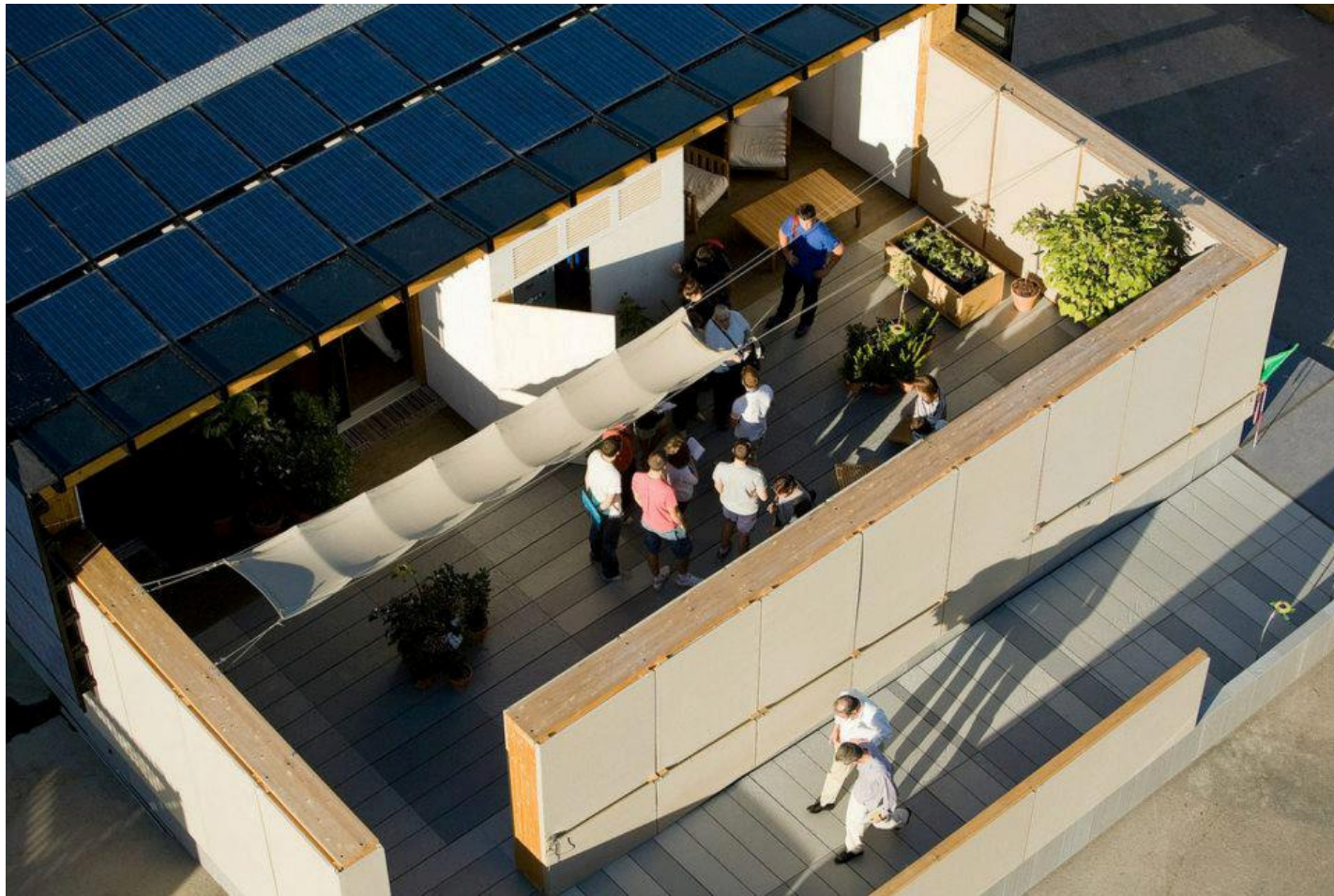
Chiara Tonelli



















1 passiva, 2 attiva, 3 veloce, 4 eco-attenta, 5 densa



1
passiva

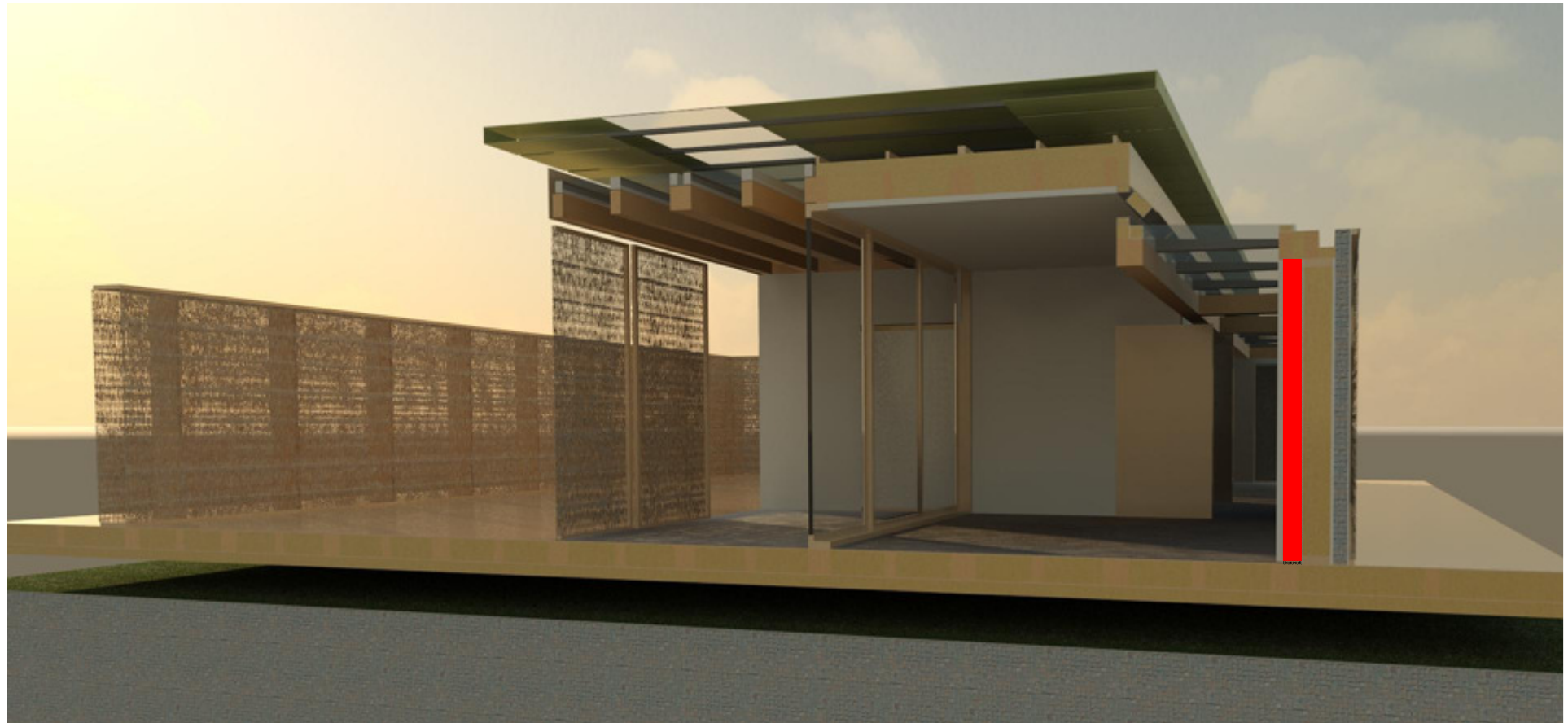


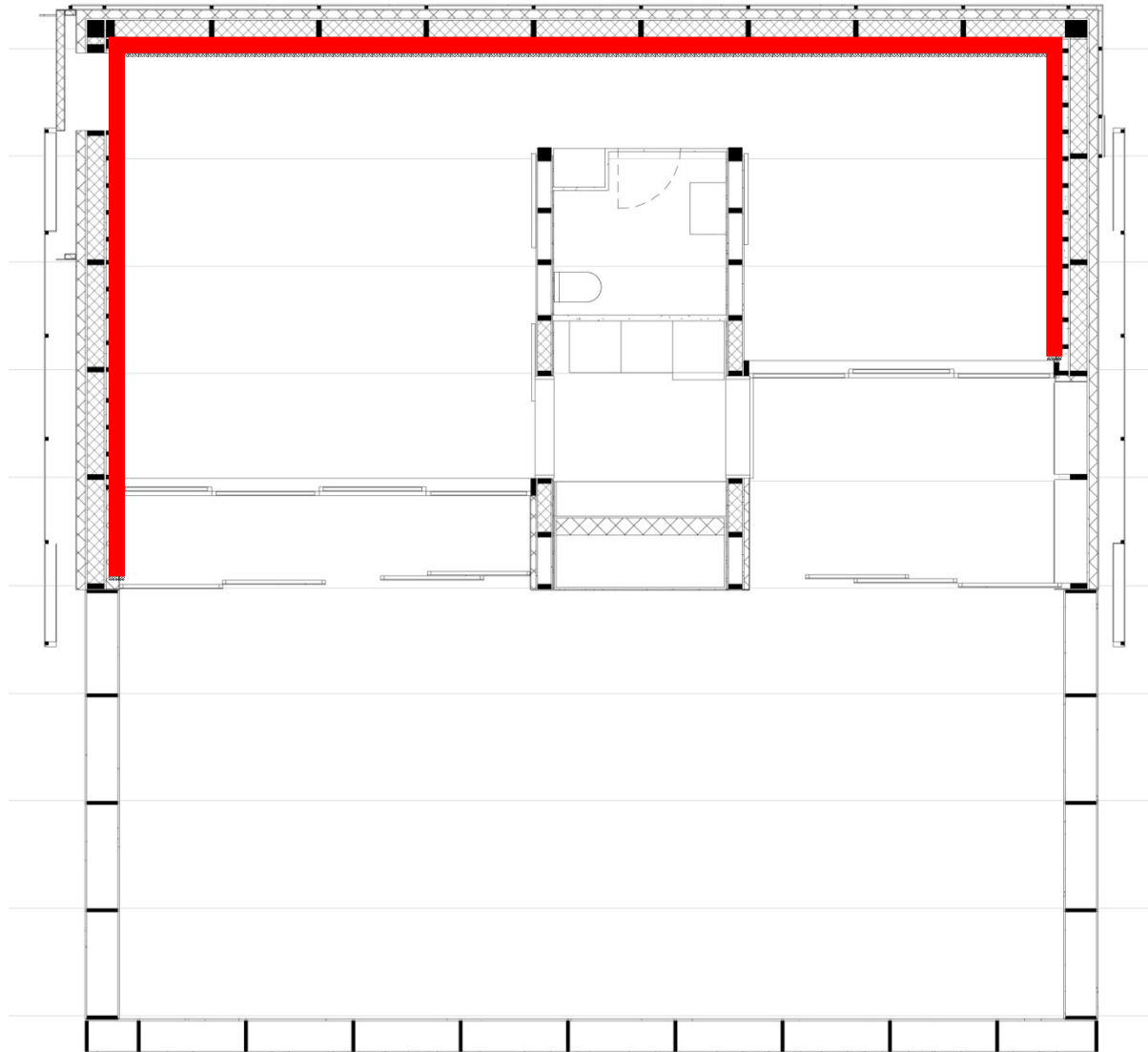


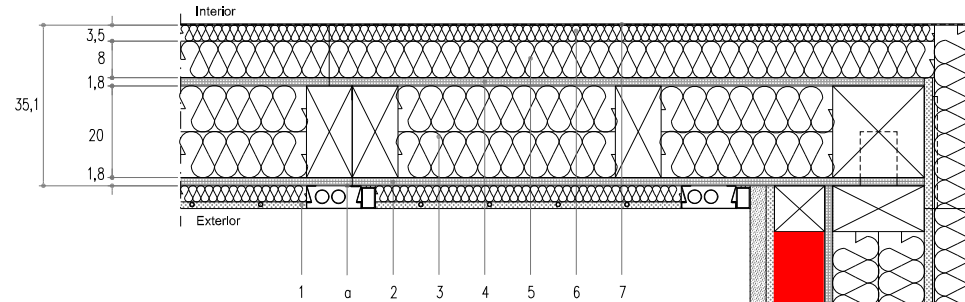


RUBNER
CASA CLIMA









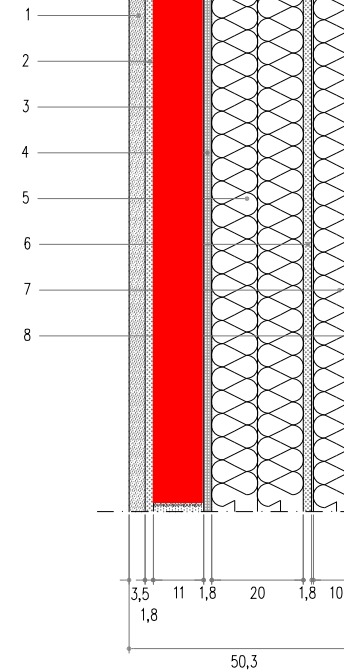
EXTERNAL VERTICAL WALL		d (mm)
1	Procrea Panel	35
2	Fermacell	18
3	Dry sand + wood battens (*)	110
4	OSB	18
5	Pavatherm Forte + wood battens (**)	200
6	Fermacell	18
7	Pavatherm Plus	100
8	Stamisol Fa	3
a	air-tightness sealant strip	
b	metal profile	
c	metal connection	

* interax 31,25 cm

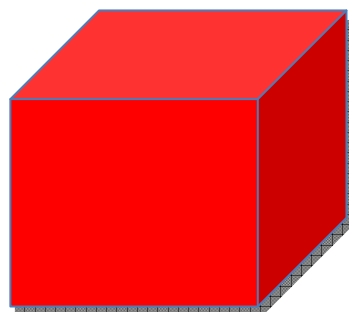
** interax 62,50 cm

ROOF		d (mm)
1	Radiant ceiling system	15
2	OSB	18
3	Pavatherm + wood battens (***)	200
4	OSB	18
5	Pavatherm Forte	80
6	Isolair - L	35
7	Naturadiff UNI	1,5
a	air-tightness sealant strip	

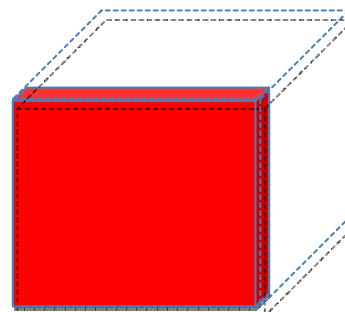
*** interax 57,50 cm





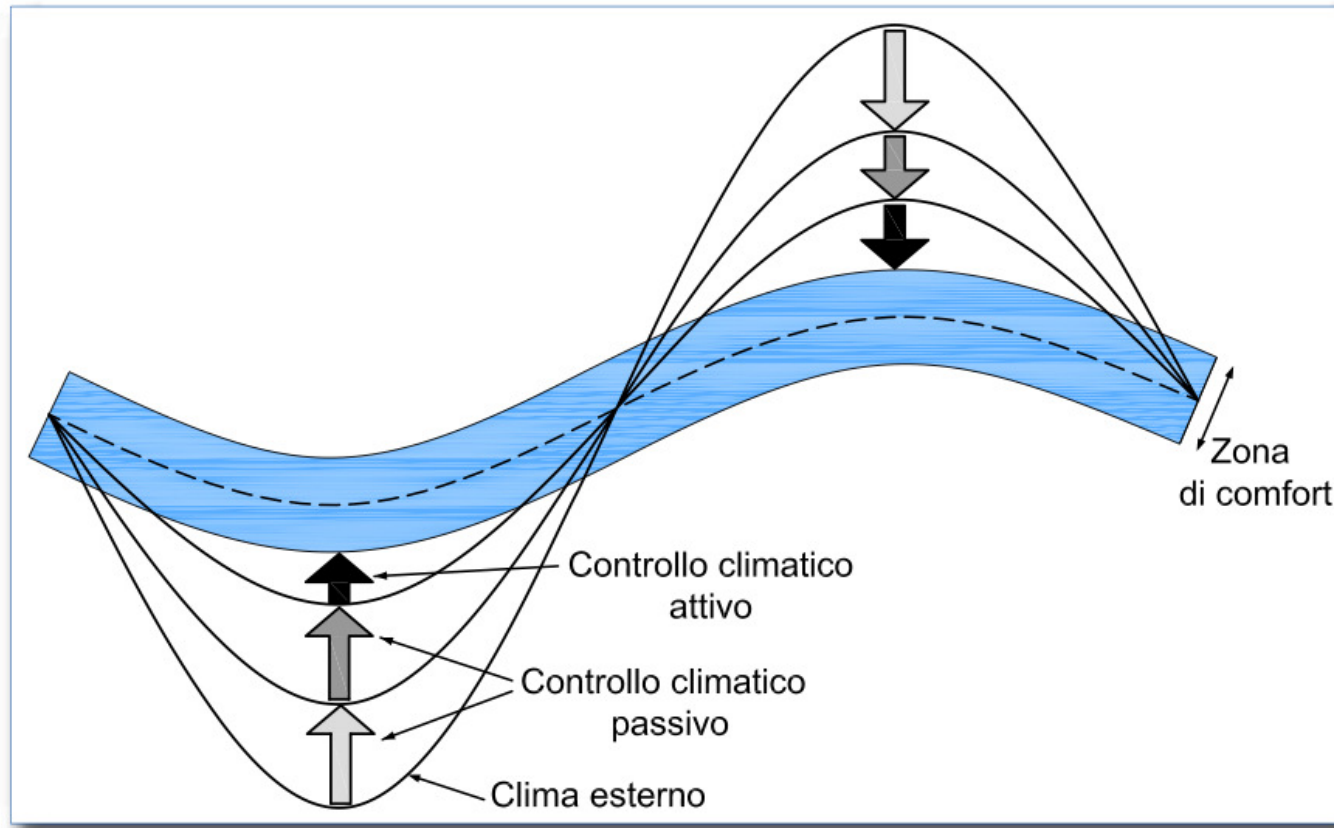


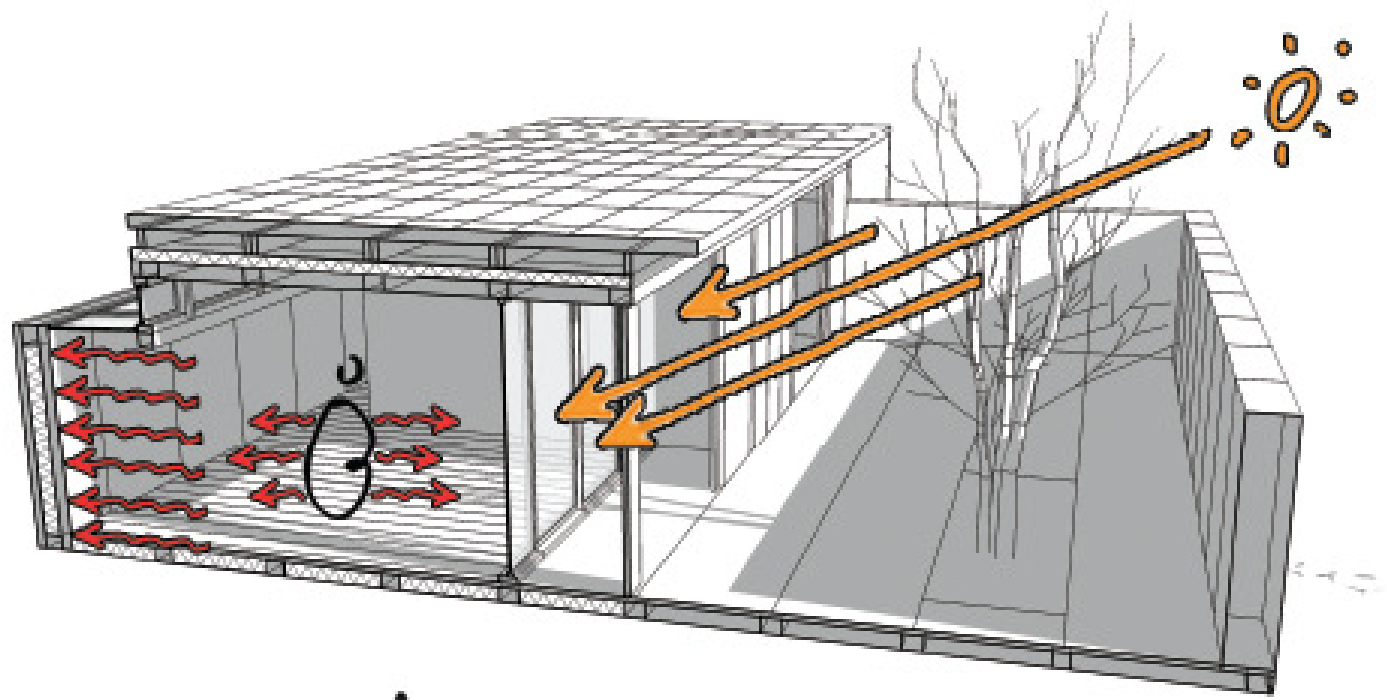
sabbia 1300-1550 kg a mc



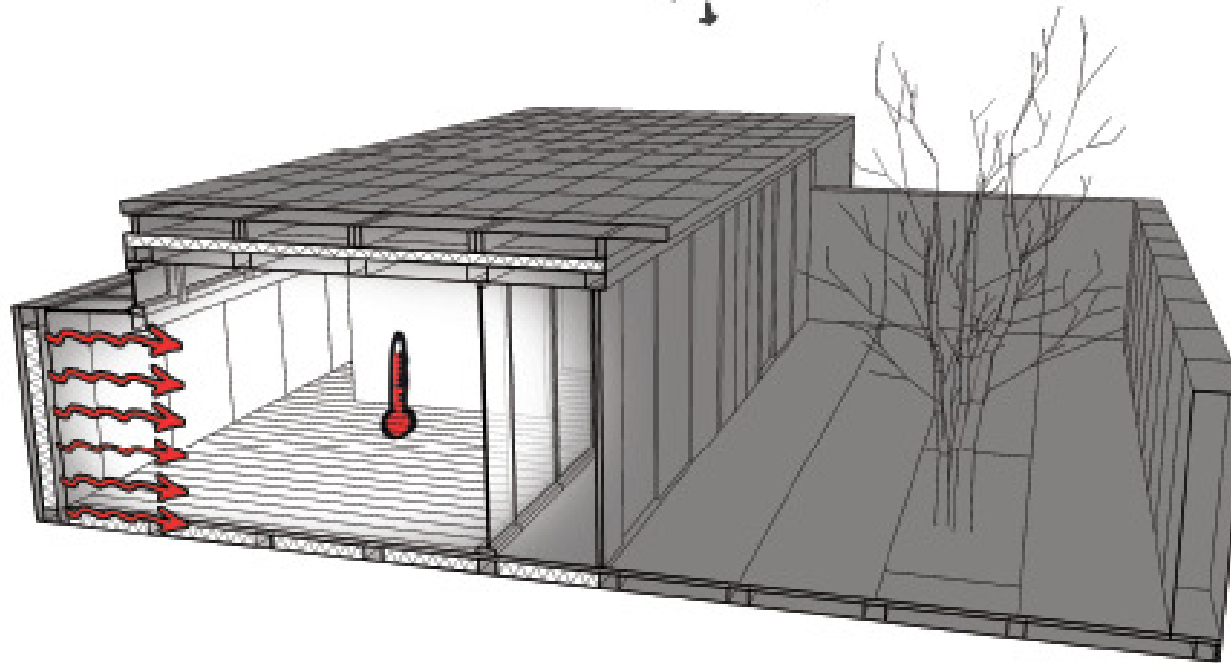
spessore 10 cm mediamente 140 kg/mq

la sabbia pesa 1300-1550 kg a mc quindi con 10 cm di sabbia si ottiene una parete che pesa in media 140 kg a mq solo di sabbia. se poi ci aggiungiamo i circa 90Kg a mq del resto dei componenti , struttura, isolanti, ecc. abbiamo una **parete da 230 kg/mq** come una costruzione in muratura massiccia

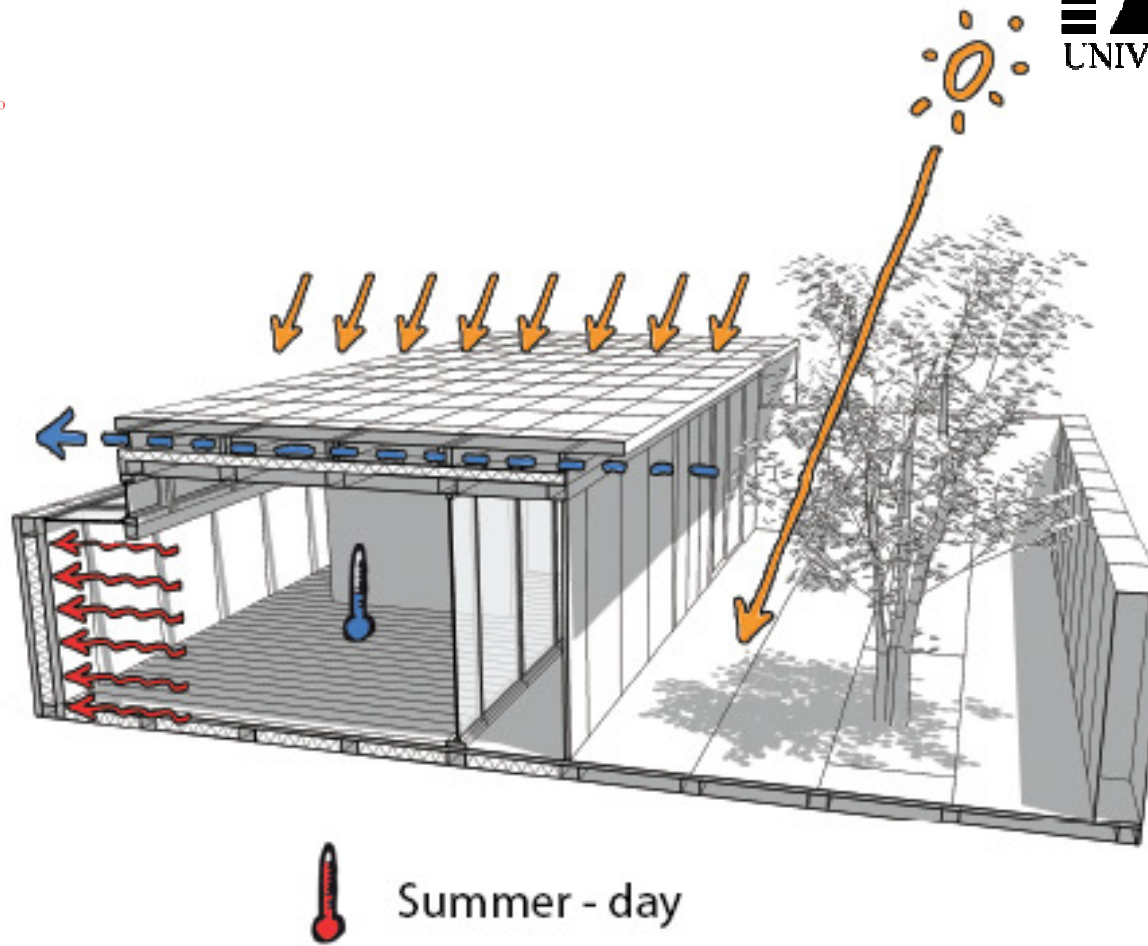


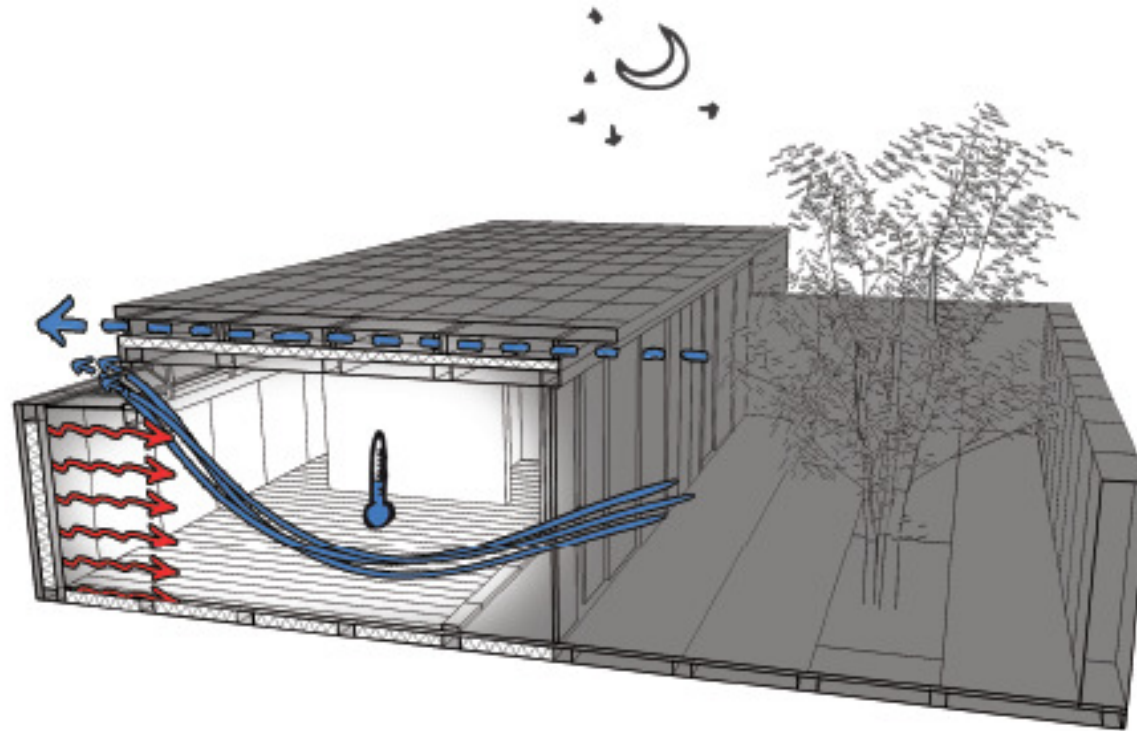


Winter - day



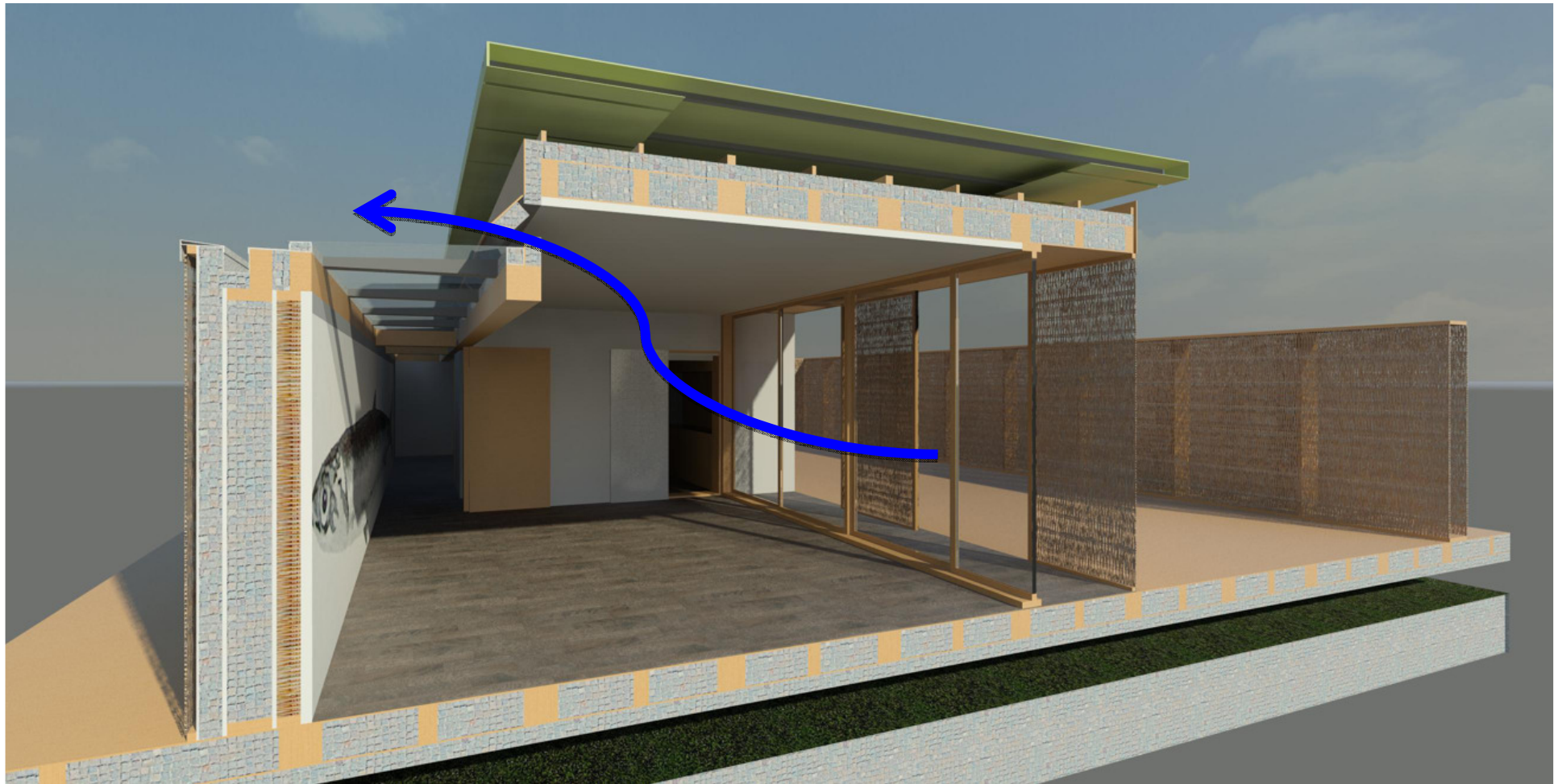
Winter - night





Summer - night





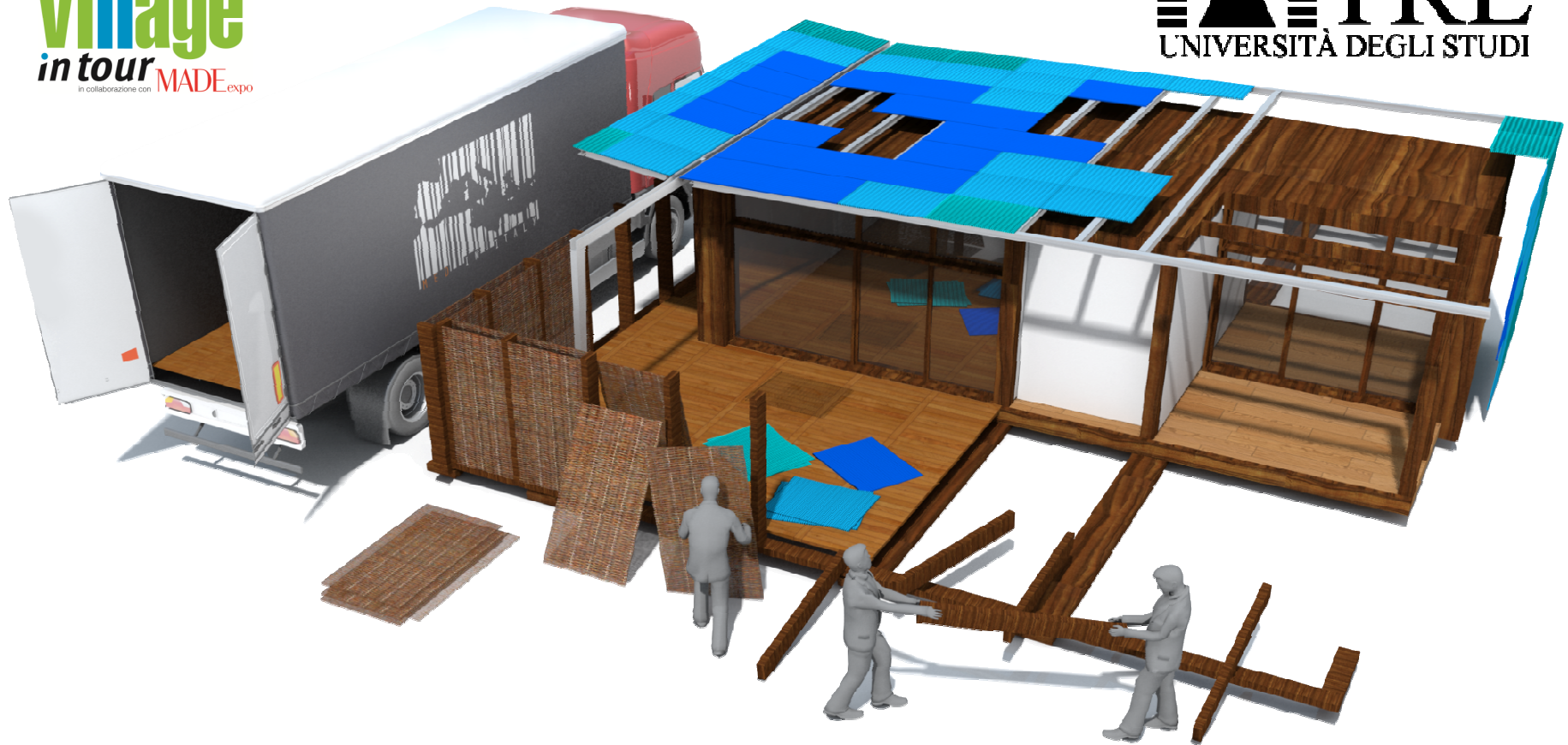


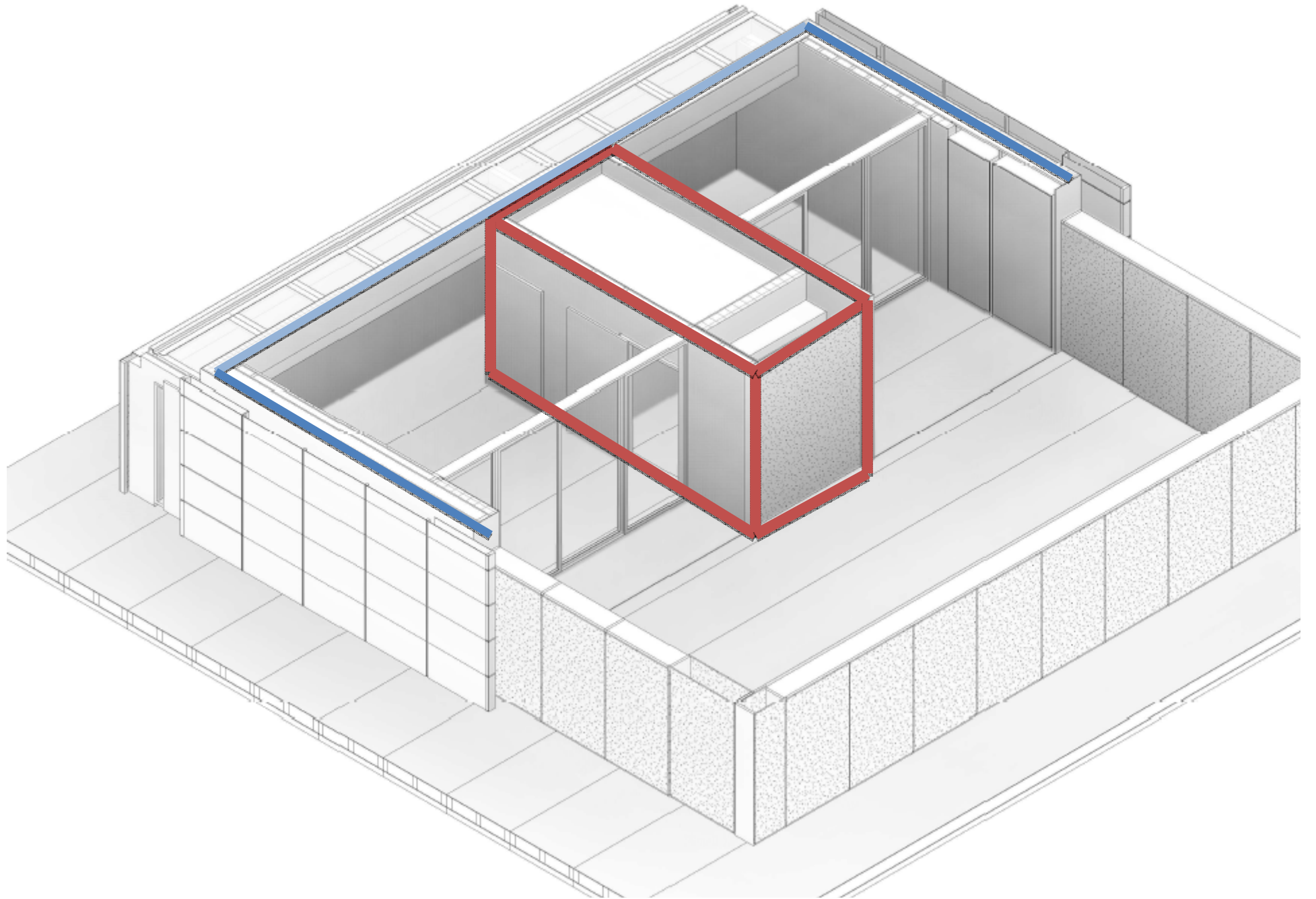


rapida

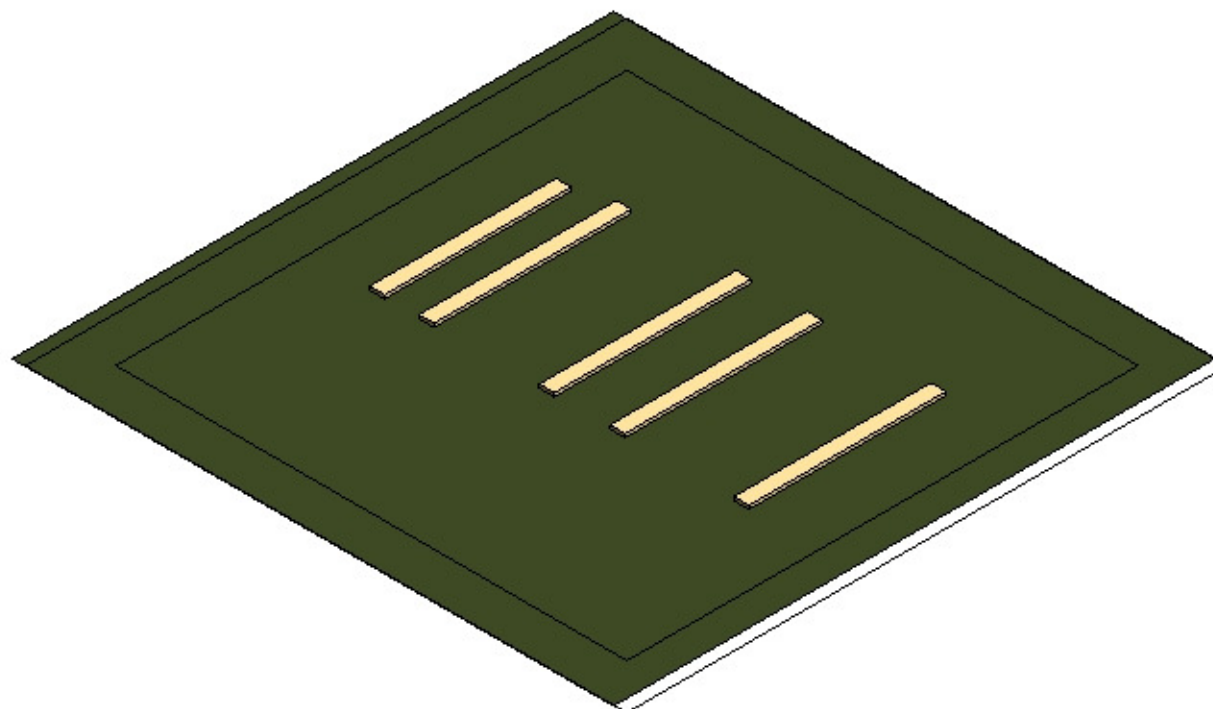
edilportale[®]
smart
village
in tour MADE_{expo}
in collaborazione con

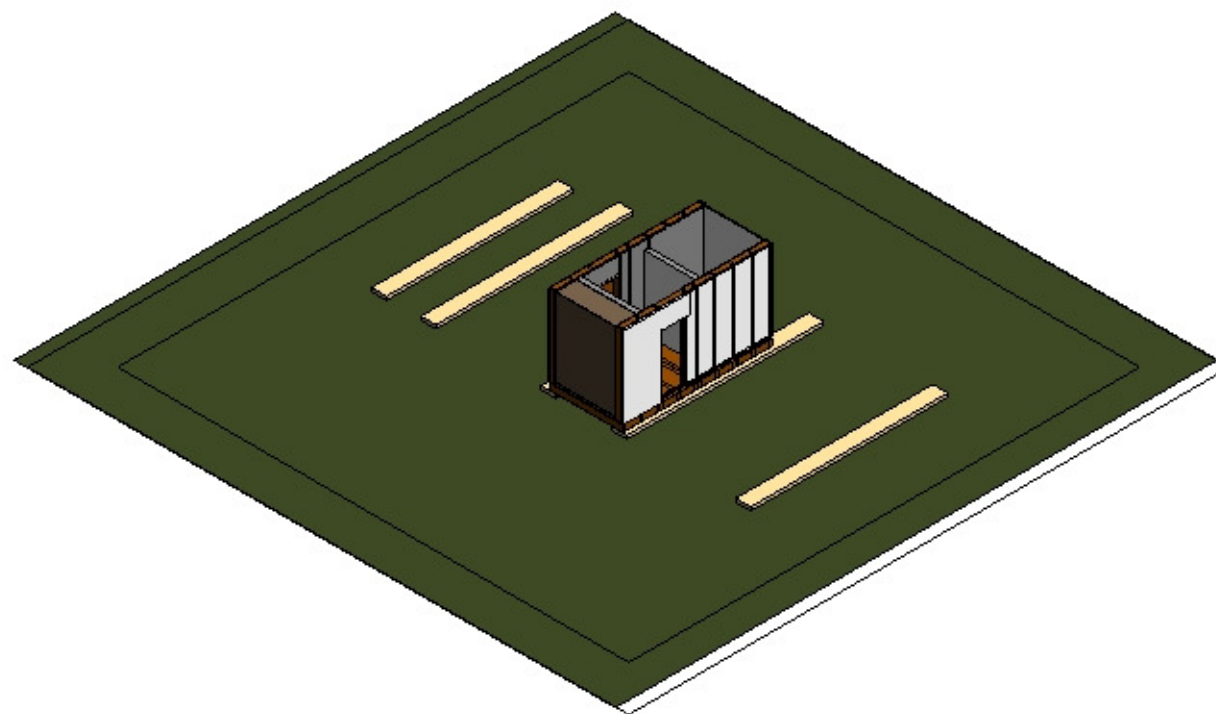
ROMA
TRE
UNIVERSITÀ DEGLI STUDI

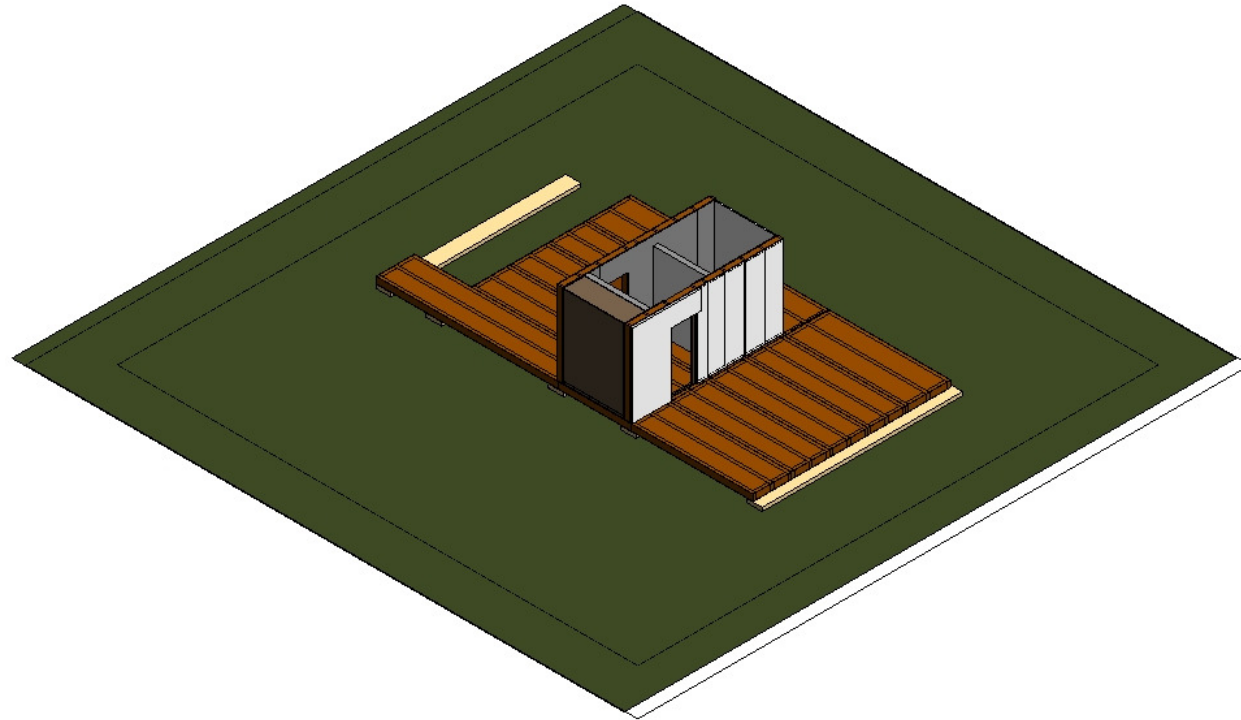


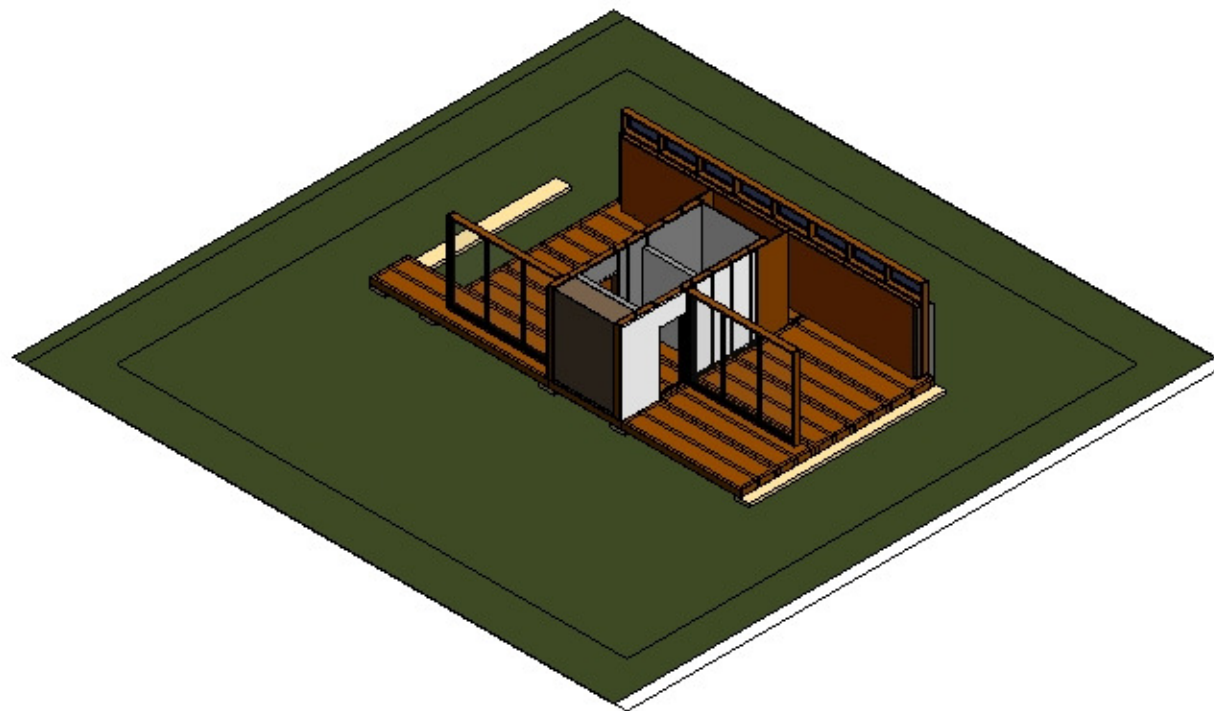


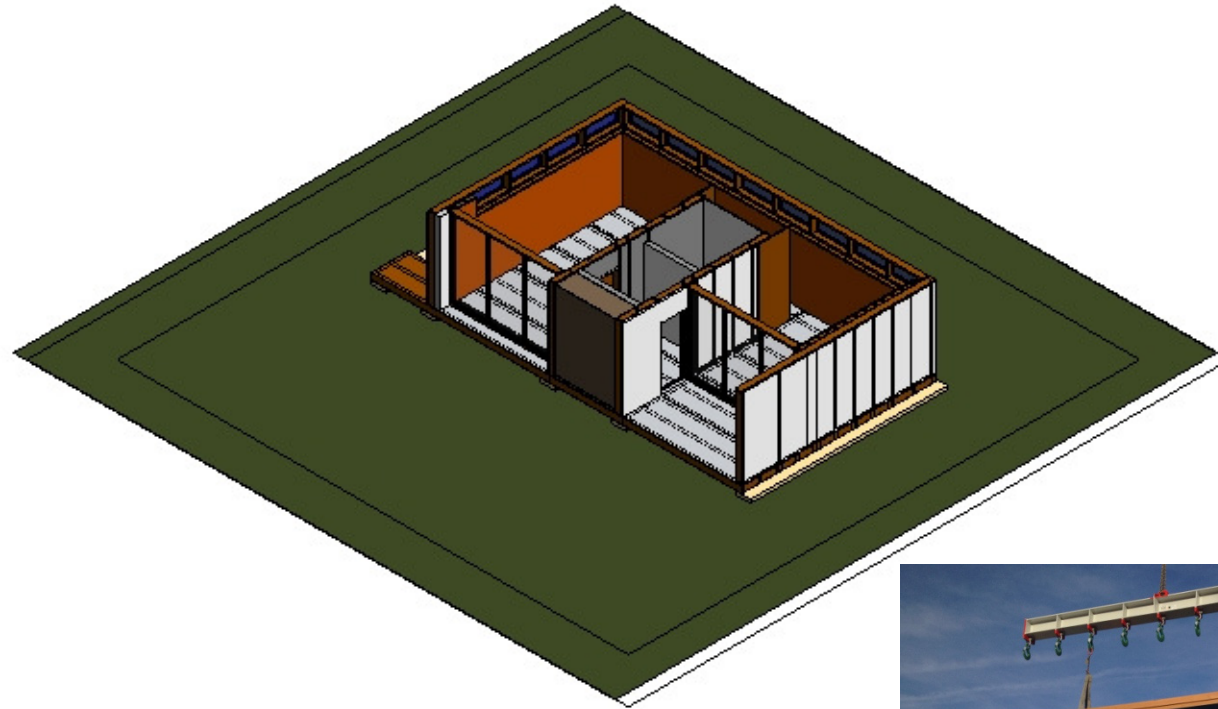


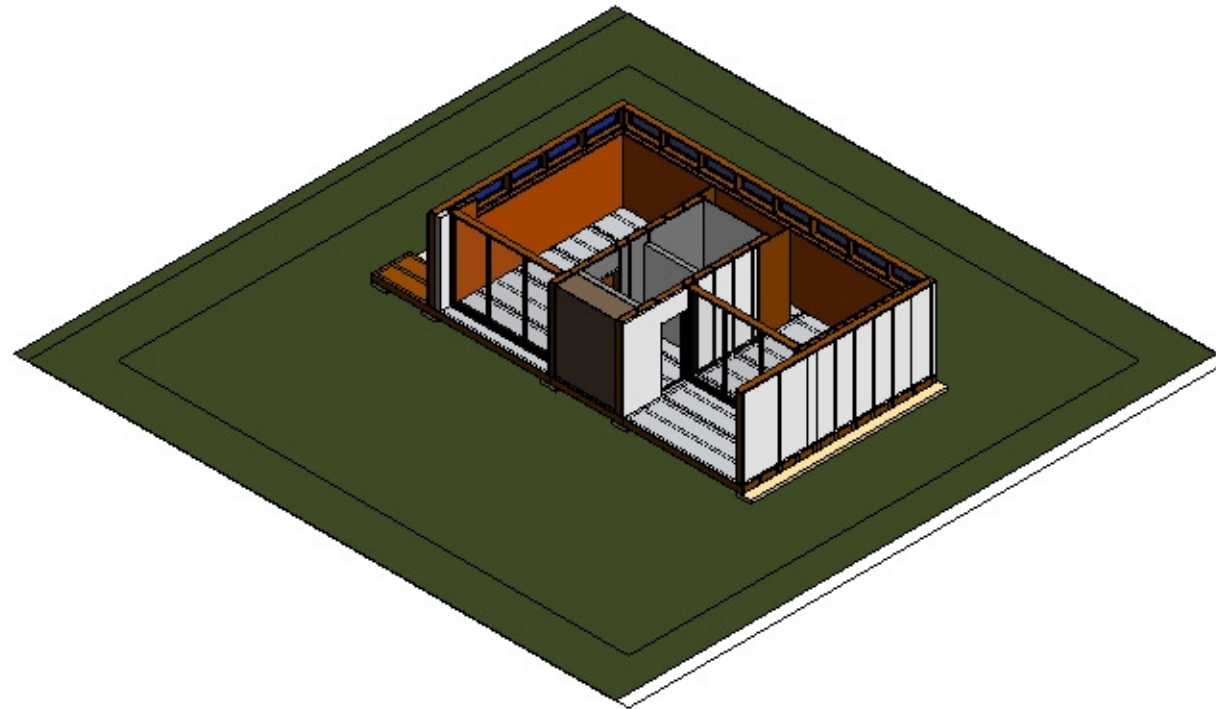


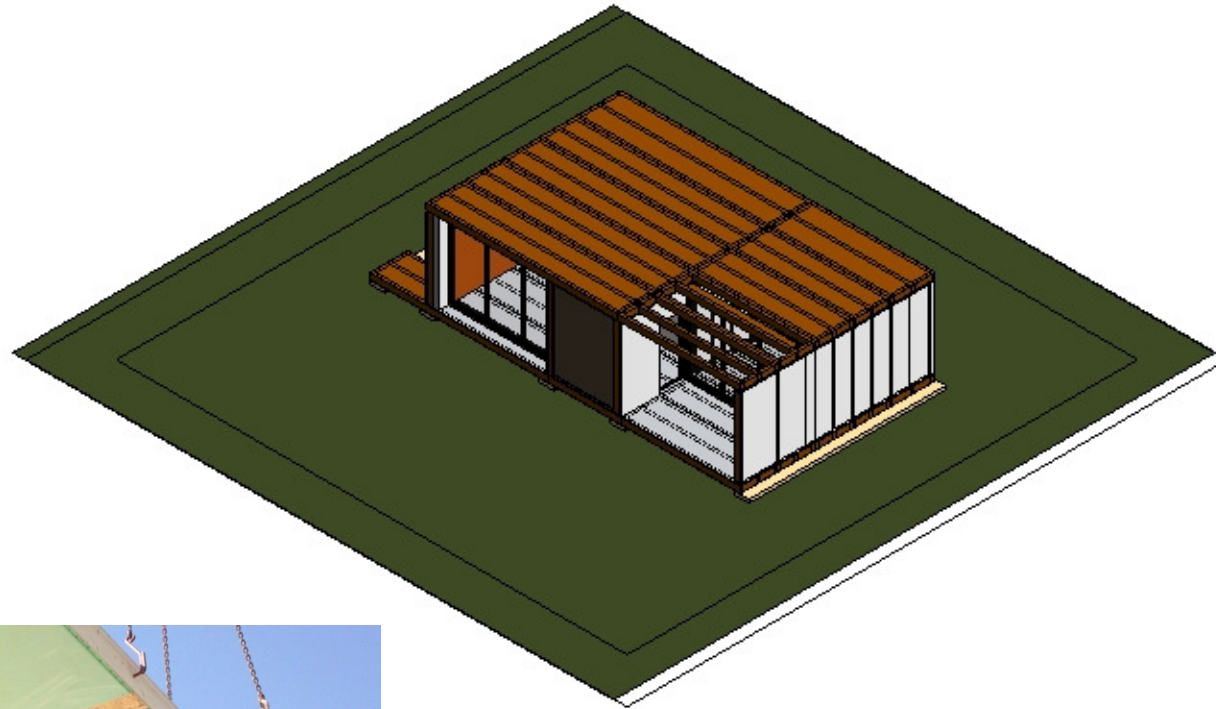


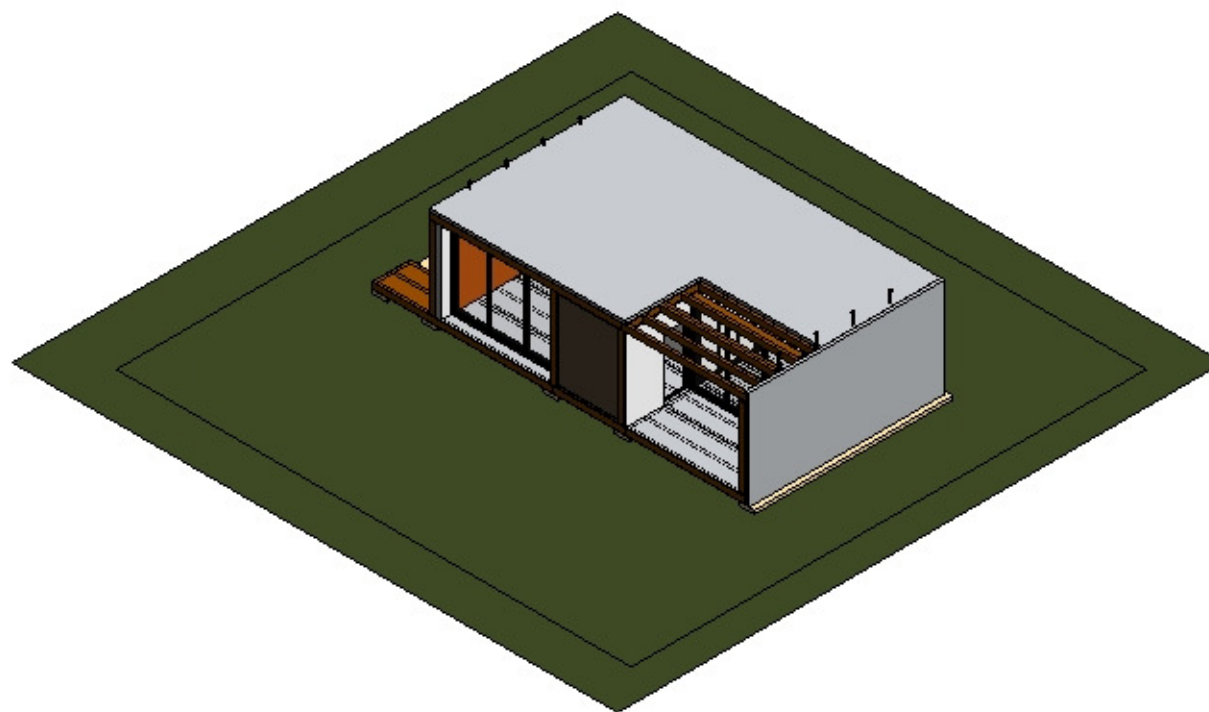


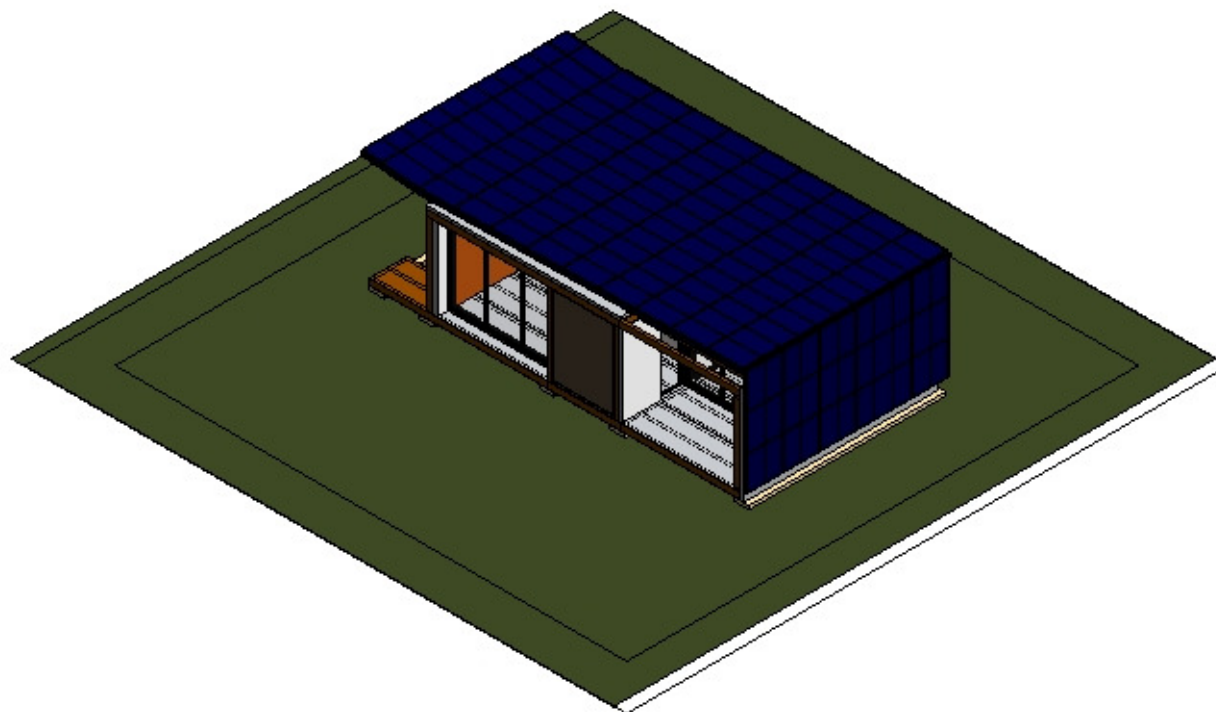


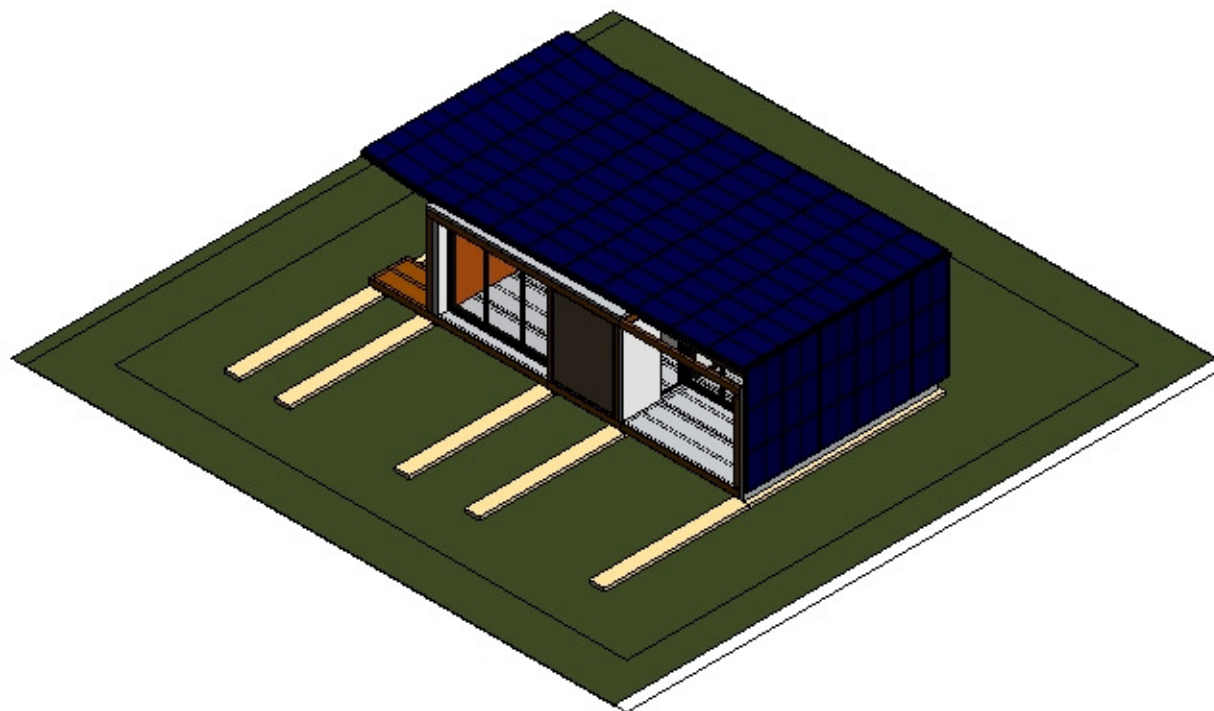


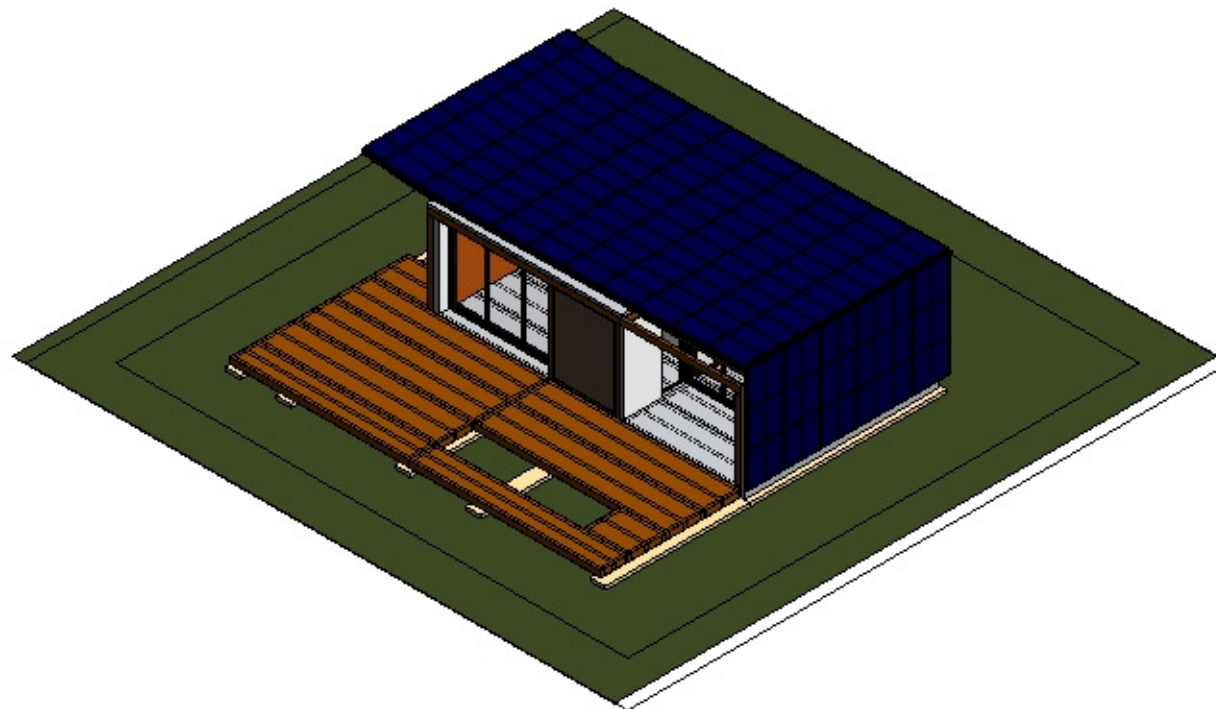


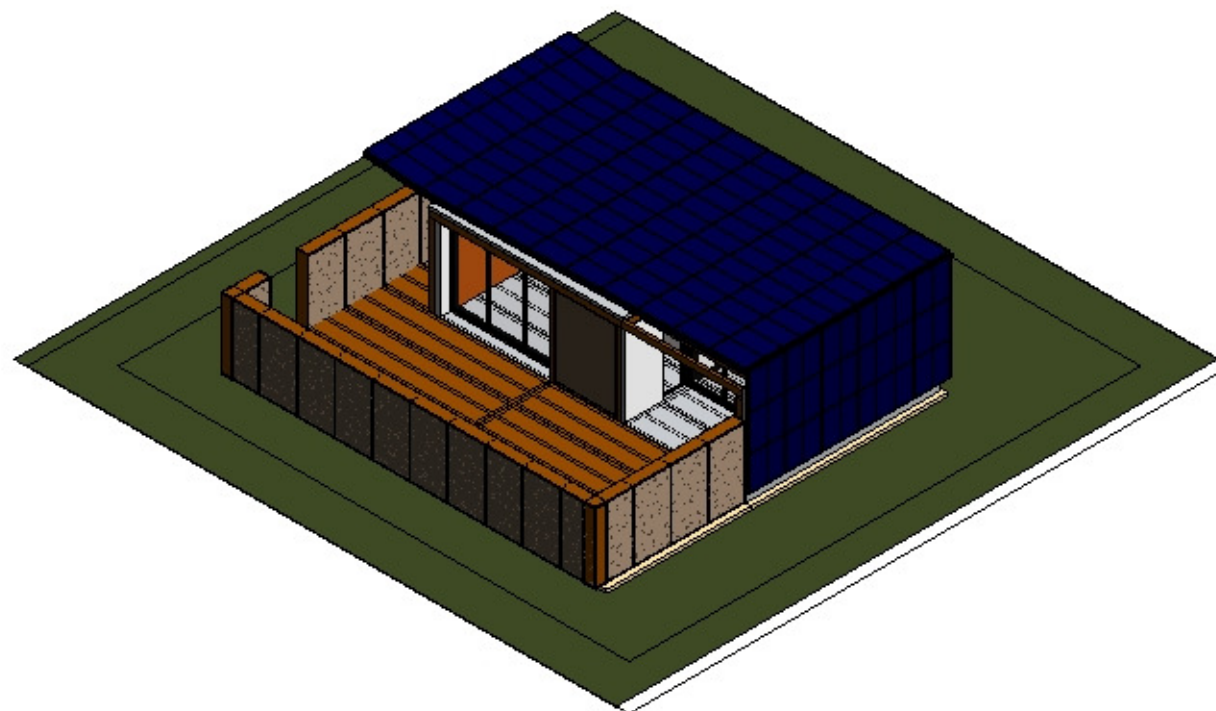










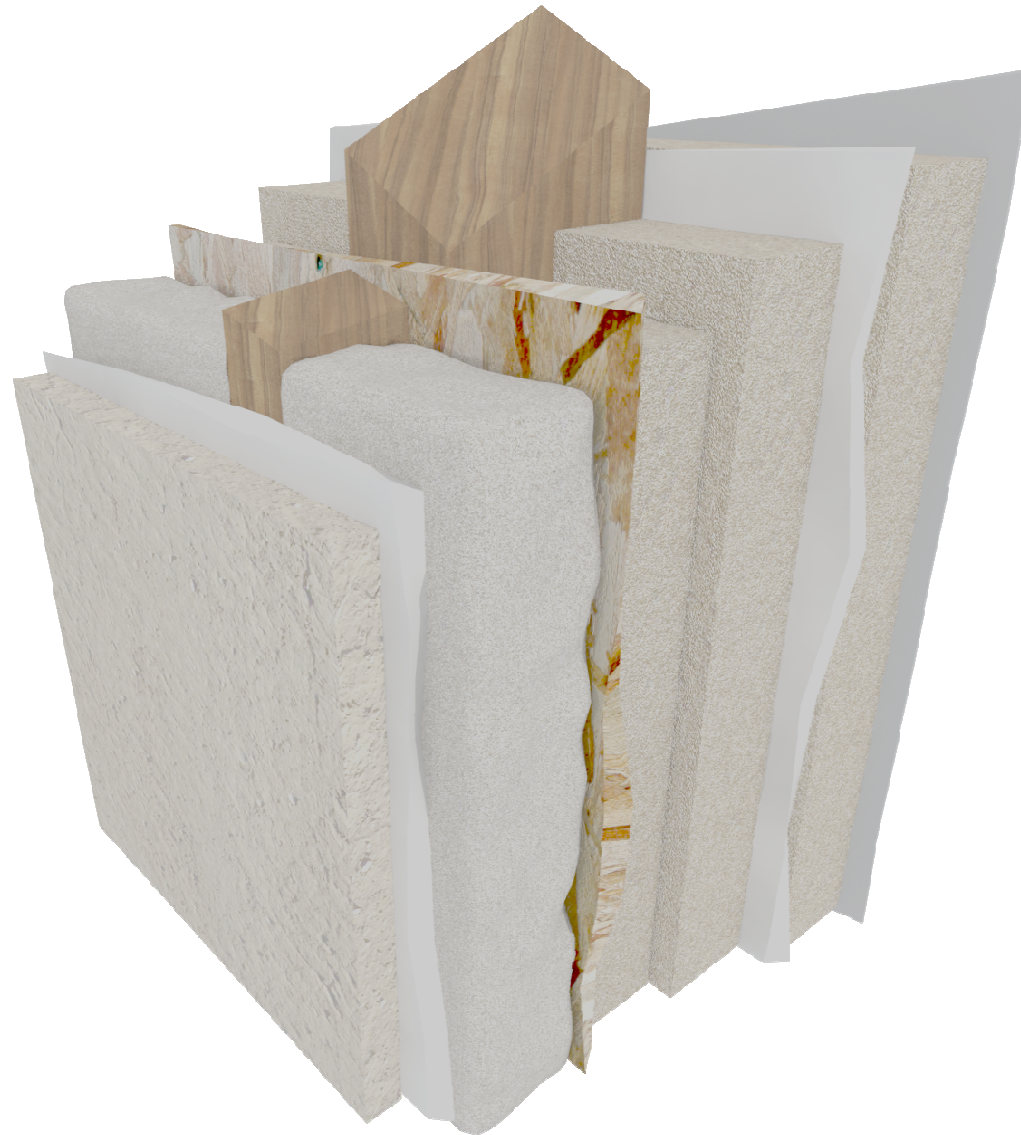




Eco- 4 attenta

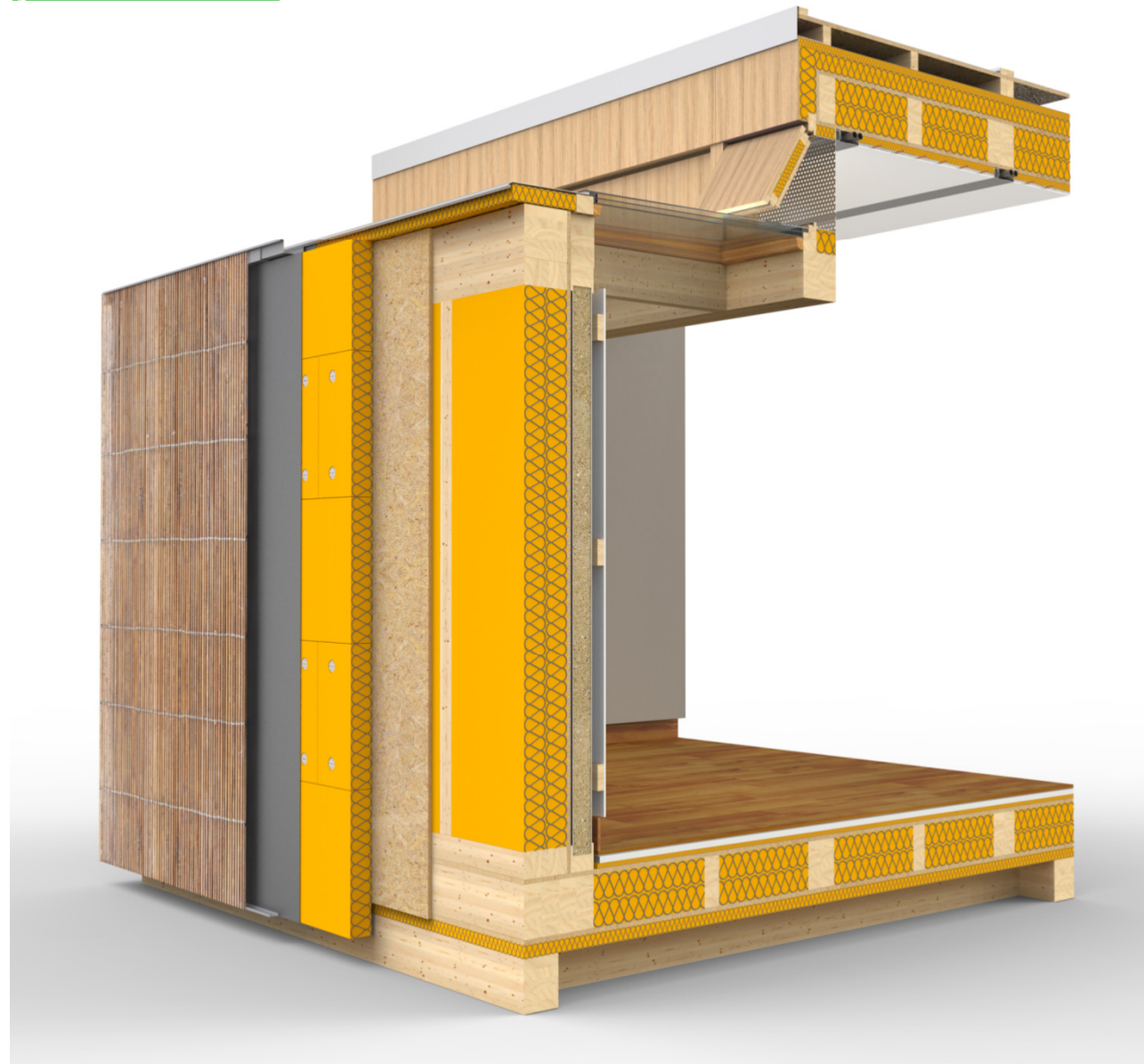




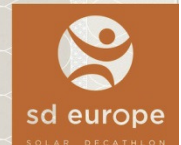


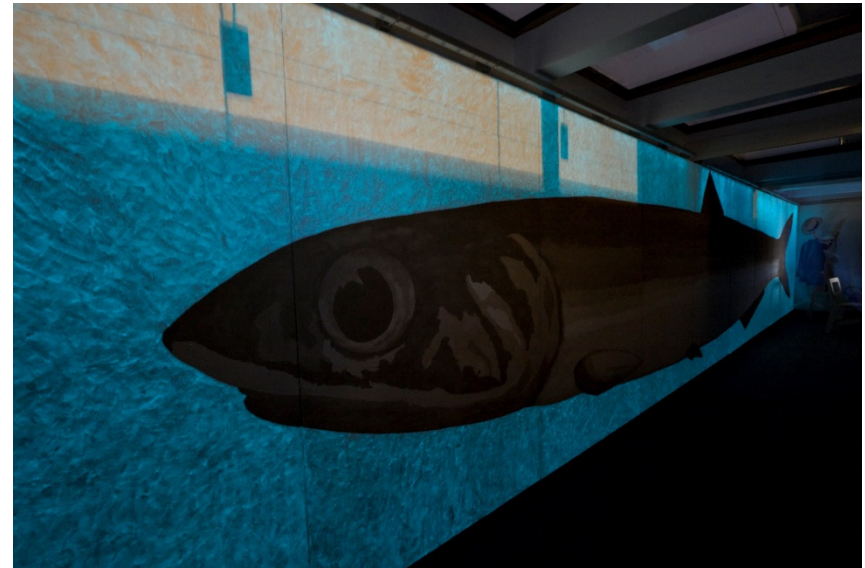
naturalia-BAU

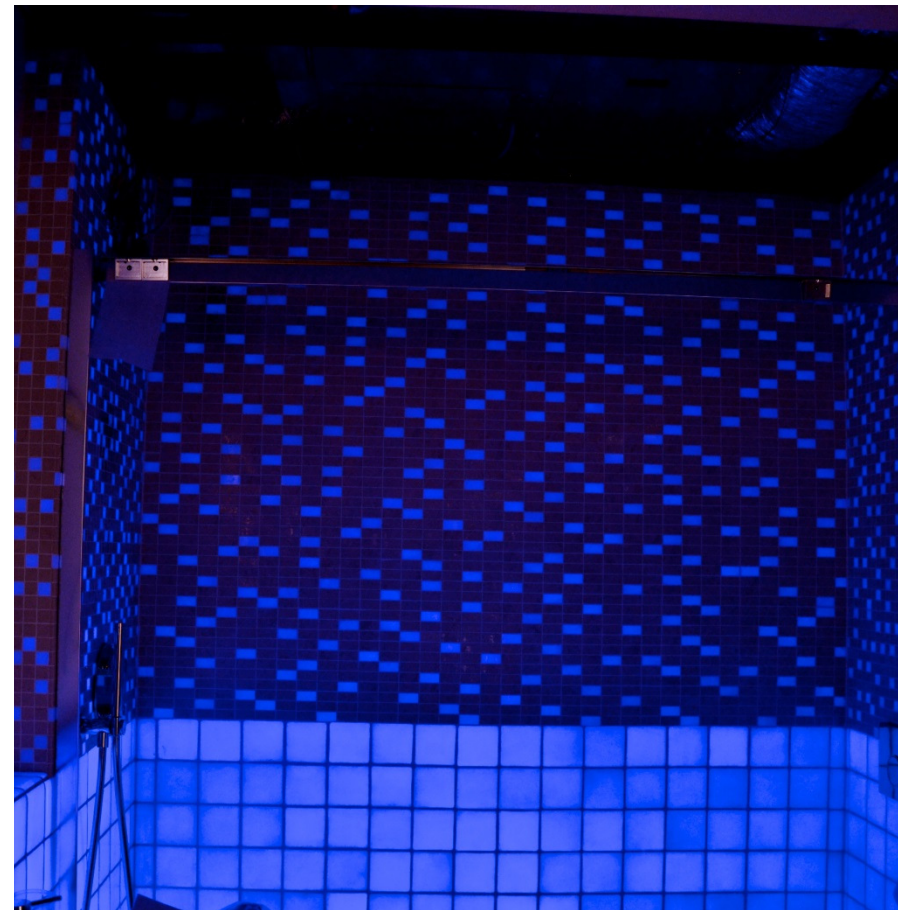
pavatex®



- 1 Procrea Panel 35mm
- 2 Fermacell 18mm
- 3 Sand 110mm
- 4 OSB 18mm
- 5 Pavatherm Forte 100mm
- 6 Pavatherm Plus 100mm
- 7 Stamisol Fa 3mm











Ecomat, una bioplastica al posto della pietra

edilportale[®]
smart
village
in tour MADE_{expo}
in collaborazione con

ROMA
TRE
UNIVERSITÀ DEGLI STUDI

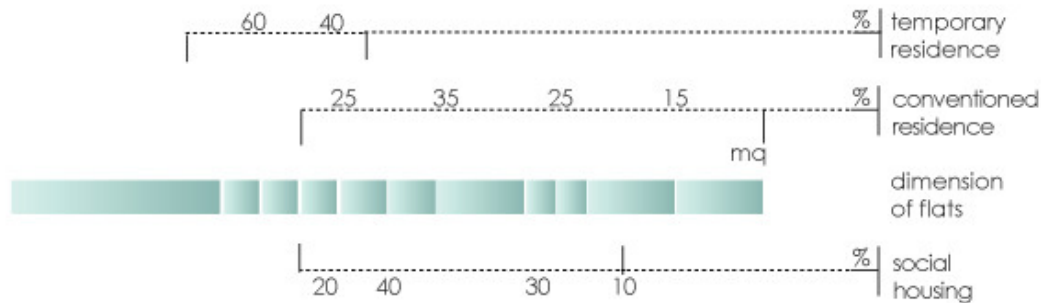
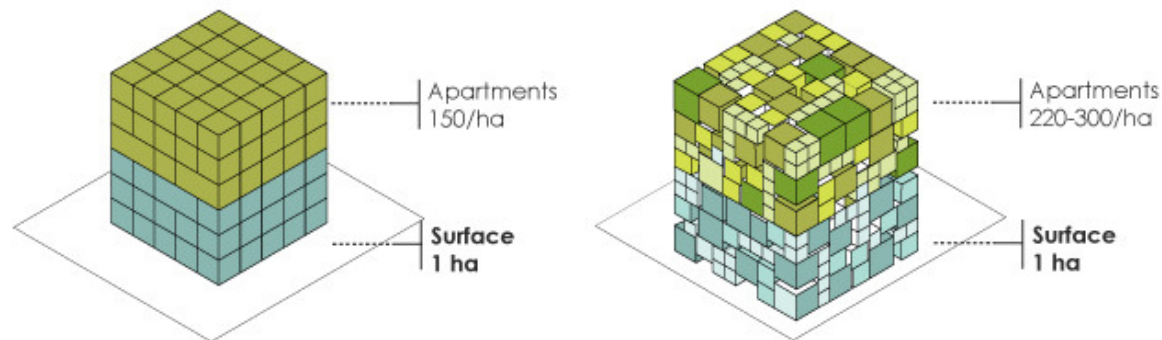


5 densa



Next

Densità urbana e densità alloggiativa



43% singles
 24,7% families with no children
 14,2% couples with no children
 152.402 divorced

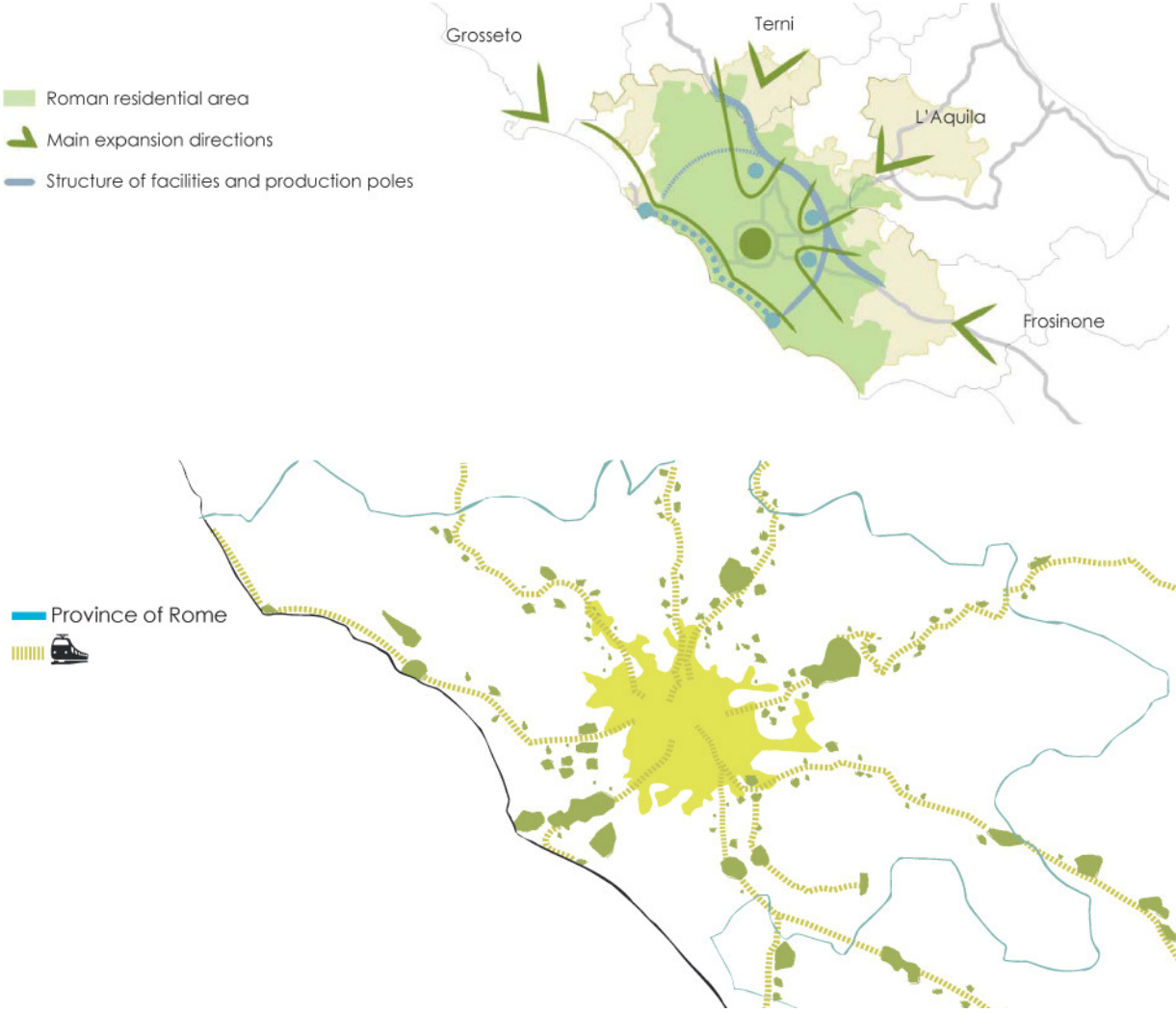
Requests for dwellings in Rome

261.000 families paying rent (24%)
 10.000 "house tickets" assigned
 (on about 24.000 requests)

370.000 young people coming out of families
 235.000 regular immigrants
 82.000 city users, people coming to Rome for less than 90 days for non-touristic reasons

79.000 workers working abroad for more than 90 days and less than 365

RhOME for denCity





Grazie per l'attenzione!

